



# The most common environments that **phs** can help solve problems on your floors



● Corridors, lifts and vending

● Washroom

● Manufacturing area

● Commercial kitchen

● Slip testing service

● Changing room

● Entrance and reception

● Sanitiser dispensers

● Wet matting area



# Contents

<b>Why mats?</b>	06
<b>Benefits of serviced matting Sustainable hygiene mats</b>	07
<b>Loose-lay Lift and Lay matting solutions Planet Range</b>	10
<b>Printed plain colour</b>	11
<b>Logo / image mats</b>	12
<b>Outdoor rubber logo mat</b>	13
<b>Outdoor premium logo mat</b>	14
<b>Tuff mats</b>	15
<b>Eco standards</b>	16
<b>Principal mats</b>	17
<b>Ultra plus mats</b>	18
<b>Hand dryer mats</b>	19
<b>Hygiene message mats</b>	20
<b>Workplace office mats</b>	21
<b>Shaped mats</b>	22
<b>PPE message mats</b>	23
<b>Comfort mats – anti-fatigue</b>	24
<b>Ultraflow mats – anti-fatigue</b>	25
<b>Premium anti-fatigue indoor mats</b>	26
<b>Slip Safety Service</b>	27
<b>Wet area matting</b>	28
<b>Fitted Lift and Lay matting solutions</b>	29
<b>Fitted principal mats</b>	30
<b>Logo/Image - fitted</b>	31
<b>Printed plain colours</b>	32
<b>Lift car mats logo/image</b>	33
<b>Permanent fitted matting solutions</b>	34
<b>Forma HD – plain</b>	35
<b>Forma HD – logo</b>	36
<b>Tergo HD</b>	37
<b>Foris – fitted</b>	38
<b>Smart Step Loop</b>	39
<b>Megahold</b>	40
<b>Fixed entrance mat cleaning</b>	41
<b>Work Matta</b>	42

## Why mats?

**51%** of plaintiffs win liability claims for slips and falls

Source: Jury Verdict Research



Source: International Workplace

**90%** of slips occur when the floor is wet

Source: HSE



Source: Dept. of Environment

**Slips**, trips and falls are the most common injury to employees

Source: HSE

**40%** of any cleaning budget is used to clean the floors

Source: Carpet and Floor Covering Review

## Benefits of serviced matting

- > **Image** and brand awareness.
- **Reducing** cleaning time and cost on site.
- **Protecting** floors from premature damage.
- **Preventing** slips and trips - legal requirement.
- **Being** better than your rival across the street!
- **Cleaner** floors - improves image.
- **Drier** floors - prevent slips.
- **Health** and safety compliant.
- **Storing** foot-borne dirt and removing from premises.

# Sustainable hygiene mats



As the leading hygiene services provider in the UK, Ireland, and Spain, you can count on **phs** Group to do the right thing.

And, with over 120,000 customers relying on us across 300,000 locations to help make being green as much a part of their day-to-day operations as it is ours, we believe it's our responsibility to set benchmarks for standards, drive change and innovate. **Made from ECONYL**

To help contribute to your environmental and ecological credentials, phs floor mats are made from **ECONYL** yarn.

**ECONYL** regenerated nylon is made by recovering nylon waste. This includes fishing nets dredged from the oceans and aquacultures that would otherwise be left to pollute the ocean. As well as fabric and carpet scraps from mills, that would otherwise be destined for landfill.

So, our mats are not only helping keep our customers floors clean, but they are also helping to clean up the oceans too.



## DID YOU KNOW?

640,000 tonnes of fishing nets are abandoned in our oceans each year, trapping and killing wildlife and damaging reefs



# Loose-lay Lift and Lay matting solutions



# Planet Range



Our planet range of mats offer limitless design opportunities. From creating a complete brand experience, to providing additional health and safety signage.

## Key features:

- New pattern developed to compliment dark grey, blue, brown and red in our forma and foris colour range
- Can be used as a patterned mat or logo mat
- Please note that the planet range of fleck patterned colours are not an exact match to our Forma and Foris range of colours due to the different textile used in the product
- Available in any bespoke size up to 4.02sqm (loose-lay) and up to 3.9sqm (fitted)

## Options:

Planet Range - Loose Lay - 120 x 85	17035168
Planet Range - Loose Lay - 150 x 85	17035170
Planet Range - Loose Lay - 180 x 115	17035181
Planet Range - Loose Lay - 240 x 115	17035193
Planet Range - Loose Lay - 240 x 150	17035200
Planet Range - Loose Lay - 350 x 115	17035211
Planet Range - Loose Lay - 120 x 85	17035223
Planet Range - Loose Lay - 150 x 85	17035235
Planet Range - Loose Lay - 180 x 115	17035247
Planet Range - Loose Lay - 240 x 115	17035259
Planet Range - Loose Lay - 240 x 150	17035260
Planet Range - Loose Lay - 350 x 115	17035272

Also available fitted in any matwell upto 3.9sqm

**Please Note:** 10cm is added to the size of each mat in both directions as standard procedure by the logo's team to give the fitter the material required to cut.

Maximum width or length is 185cm you can go any size in the opposite direction as long as you are within 3.9sqm.

Also available in a fitted lift and lay mat option.



# Printed plain colour mats

Same price as logo mats



## Key features

- Standard service is 26 p.a. (fortnightly)
- Monthly (13p.a.) & weekly (52p.a.) available
- Backing = 100% nitrile rubber
- Total thickness = 9mm
- Fire resistance = Cfl s1
- 18mm anti trip rubber border all around
- Bespoke mats i.e. dedicated stock
- Antistatic = <2kV
- BS8300 / DDA / ADA compliant
- Gripper or smooth backed
- DMS backing for heavy weight smooth backing
- 150 colour choices
- Bespoke sizes are available up to mac. 4.02sqm
- HD344 can not be used
- Indoor use only

## Available options

Backing options:		Gripper or smooth	DMS backed smooth only
120cm x 85cm	1.02m <sup>2</sup>	4 x 3	107950
150cm x 85cm	1.27m <sup>2</sup>	5 x 3	107951
180cm x 115cm	2.07m <sup>2</sup>	6 x 4	107952
240cm x 115cm	2.76m <sup>2</sup>	8 x 4	107953
240cm x 150cm	3.60m <sup>2</sup>	8 x 5	107954
350cm x 115cm	4.02m <sup>2</sup>	12 x 4	107955



# Logo / image mats



## Key features

- Standard service is 26 p.a. (fortnightly)
- Monthly (13p.a.) & weekly (52p.a.) available
- Backing = 100% nitrile rubber
- Total thickness = 9mm
- Fire resistance = Cfl-s1
- 18mm anti-trip rubber border all around
- Bespoke mats i.e. dedicated stock
- Antistatic = <2kV
- BS8300 / DDA / ADA compliant
- Gripper or smooth backed
- DMS backing for heavy weight smooth backing
- 150 colour choices
- Bespoke sizes are available up to max. 4.02sqm
- HD344 can not be used as a background colour
- Try to use dark practical background colours
- Indoor use only



## Available options

Backing options:		
120cm x 85cm	1.02m <sup>2</sup>	4 x 3
150cm x 85cm	1.27m <sup>2</sup>	5 x 3
180cm x 115cm	2.07m <sup>2</sup>	6 x 4
240cm x 115cm	2.76m <sup>2</sup>	8 x 4
240cm x 150cm	3.60m <sup>2</sup>	8 x 5
350cm x 115cm	4.02m <sup>2</sup>	12 x 4



# Outdoor rubber logo mat

Outdoor Rubber Logo Mats feature your custom logo or artwork overlaid onto a comfort mat.

Multicolor images are created by molding a digitally printed polymeric material into the durable nitrile rubber surface of the mat.



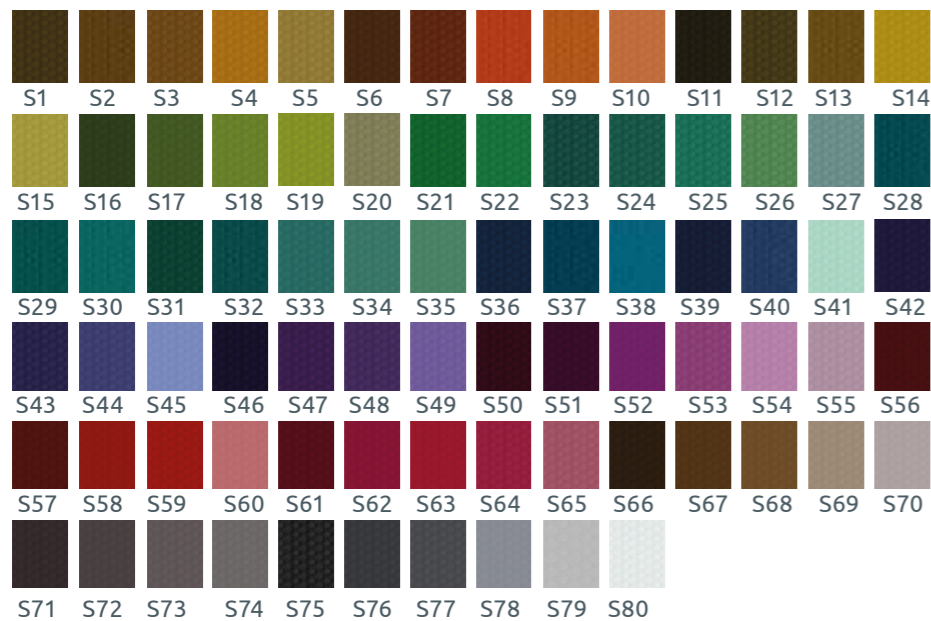
## SPECIFICATIONS

- RUBBER**  
100% Nitrile EXS™  
thickness 2,9mm
- TOTAL WEIGHT**  
5,20 kg/m<sup>2</sup>
- THICKNESS**  
3mm
- 13pa or 26pa

### Available options

Mat size	Max logo size	Code
75x85cms	55x65	17034851
85x150cms	65x130	17034863
115x180cms	95x160	17034875
150x250cms	130x230	17034887

Size Tolerance: +/- 5%



**High Definition**  
Photographic quality images are printed on thermoplastic material and molded into rubber



**Textured slip resistant surface**  
effectively removes dirt and soil.



**100% Nitrile EXSTM Rubber**  
resistant to chemicals, greases and oil.



**80 standard colour options**



**True outdoor mat**  
no shelter required



# Outdoor premium logo mat

Outdoor premium logo mats feature your custom logo or artwork on durable nylon monofibers. Combine maximum of 2 colours for the artwork.



## SPECIFICATIONS

- YARN**  
Coarse continuous filament Solution Dyed Nylon
- CARPET WEIGHT**  
1.300 g/m<sup>2</sup>
- RUBBER**  
100% Nitrile EXS™  
thickness 2,9mm
- TOTAL WEIGHT**  
5,20 kg/m<sup>2</sup>
- 13pa or 26pa



**Durable Nylon Brush monofibers**  
make for excellent scraping action.



**Drainage holes** allow for excellent drainage



**Solution Dyed fibers**  
for 100% UV-resistance.



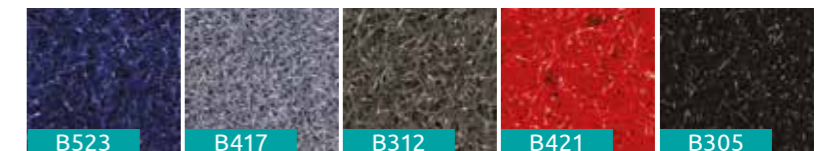
**Bleach and chemical resistant.**



**5 Colours**  
to choose from



**True outdoor mat**  
no shelter required



### Available options

#### Premium Mat

Mat size	Code
75x85cms	17034899
80x120cms	17034905
85x150cms	17034693
85x300cms	17034700
120x180cms	17034711
120x200cms	17034723
120x240cms	17034735
150x200cms	17034747

#### Premium Logo Mat

Mat size	Code
75x85cms	17034760
80x120cms	17034772
85x150cms	17034784
85x300cms	17034796
120x180cms	17034802
120x200cms	17034814
120x240cms	17034826
150x200cms	17034838

Maximum 2 colours per design  
Size Tolerance: +/- 2%  
Bespoke sizes available





# Tuff mats – canopy

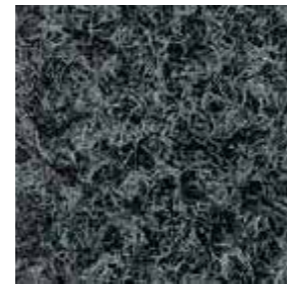
Must be under a canopy



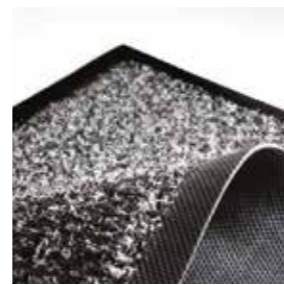
TUFF MAT in situ, must be used under a canopy if being used externally

## Key features

- Standard service is 26 p.a. (fortnightly)
- Monthly (13p.a) & weekly (52p.a.) available
- Backing = 100% nitrile rubber
- Total thickness = 10mm
- Fire resistance = Dfl-s1
- 21mm anti-trip rubber border all around
- Yarn = 100% ECONYL®
- BS8300 / DDA / ADA compliant
- Bespoke mats i.e. dedicated stock
- External use under a canopy only
- Do not place in direct rainfall



Tuff Mat texture sample - grey only

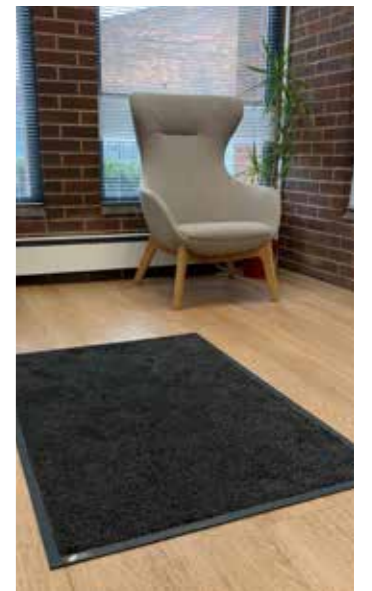


## Available options

Colour options:		Grey	
150cm x 85cm	1.27m <sup>2</sup>	5 x 3	003963
200cm x 115cm	2.3m <sup>2</sup>	7 x 4	003964
300cm x 85cm	2.55m <sup>2</sup>	10 x 3	006925



# Eco standards



## Key features

- Standard service is 26 p.a. (fortnightly)
- Monthly (13p.a) & weekly (52p.a.) available
- Backing = 100% nitrile rubber
- Total thickness = 9mm
- Fire resistance = Cfl s1
- 18mm anti trip rubber border all around
- Antistatic = <2kV
- Yarn = 100% ECONYL®
- BS8300 / DDA / ADA compliant
- Indoor use only



## Available options

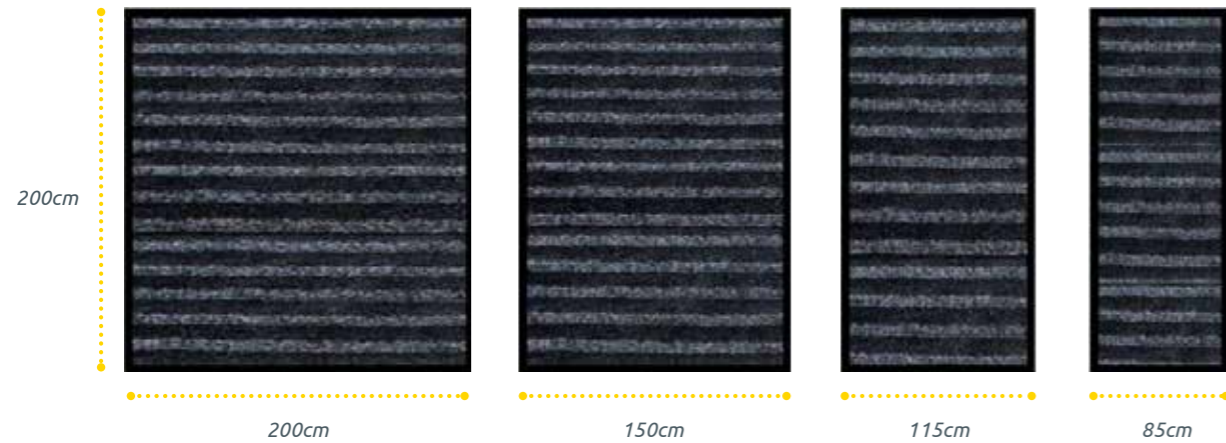
Cm	Sqm	Feet
120cm x 85cm	1.02m <sup>2</sup>	4 x 3
150cm x 85cm	1.27m <sup>2</sup>	5 x 3
180cm x 115cm	2.07m <sup>2</sup>	6 x 4
240cm x 85cm*	2.04m <sup>2</sup>	8 x 3
240cm x 115cm*	2.76m <sup>2</sup>	8 x 4
350cm x 115cm	4.02m <sup>2</sup>	12 x 4



# Principal mats



Principal mats have a pile direction as shown below:



## Key features

- Standard service is 26 p.a. (fortnightly)
- Monthly (13p.a.) & weekly (52p.a.) available
- Backing = 100% nitrile rubber
- Total thickness = 9mm
- Fire resistance = Dfl s1
- 18mm anti trip rubber border all around
- Antistatic = <2kV
- Yarn = 100% ECONYL®
- BS8300 / DDA / ADA compliant
- Only these 4 sizes available
- Bespoke mats i.e. dedicated stock
- Colours: mink and sapphire
- Gripper or smooth backed choice
- DMS backing for heavy weight smooth backing
- 50% more soil capture than standard mats
- 59% more moisture absorb than standard mats
- Most effective mat at soil & moisture capture
- Two different textiles combined together
- Indoor use only

## Available options

Backing options:			Gripper or smooth	DMS backed smooth only
200cm x 85cm	1.7m <sup>2</sup>	6½ x 3	16459866	17020232
200cm x 115cm	2.3m <sup>2</sup>	6½ x 4	16459878	17020244
200cm x 150cm	3.0m <sup>2</sup>	6½ x 5	16459880	17020256
200cm x 200cm	4.0m <sup>2</sup>	6½ x 6½	16459891	N/A



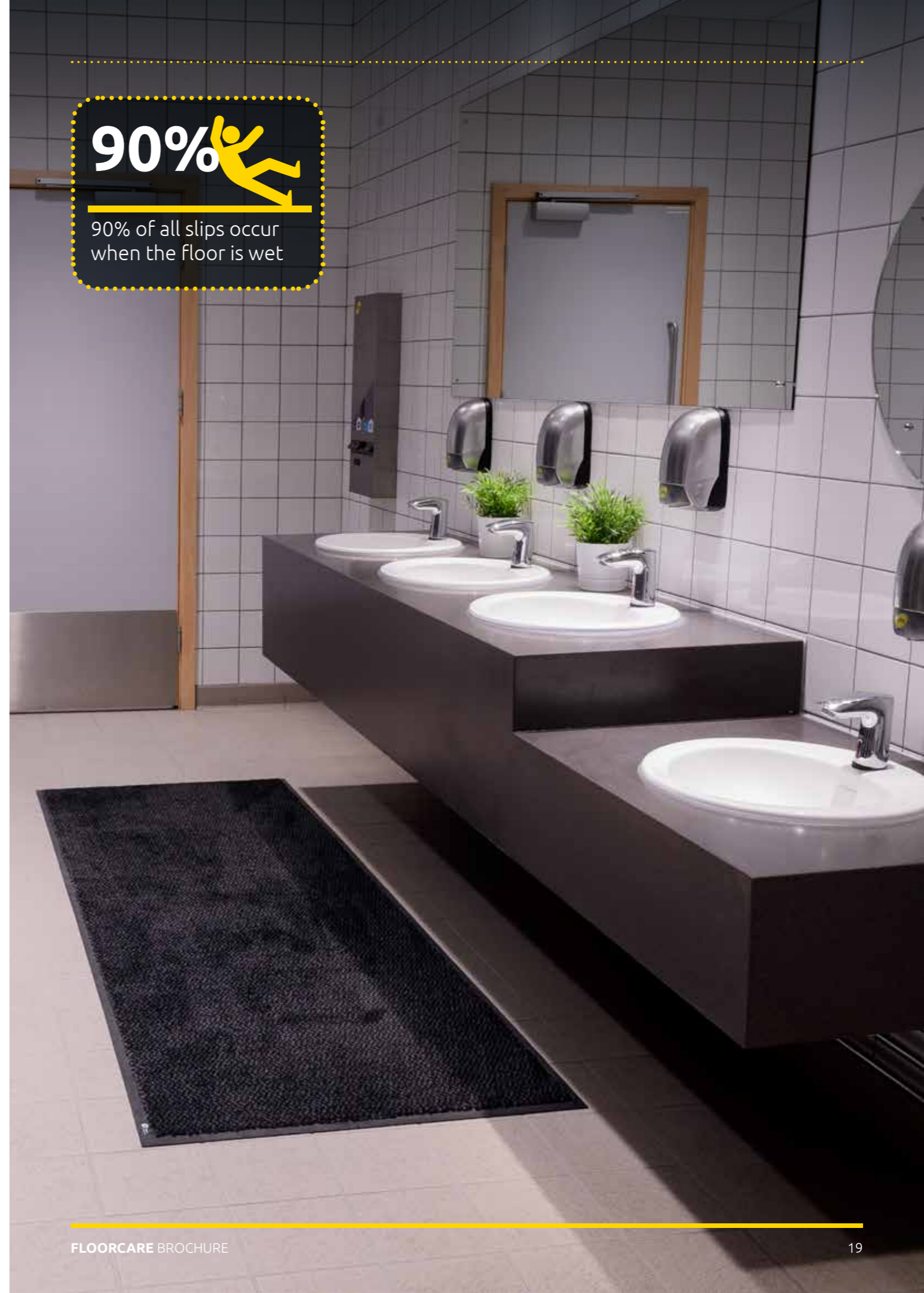
Principal mats are all designed specifically to be a full 2m long to cater for the circumference wheel of a wheelchair in line with building reg. BS8300



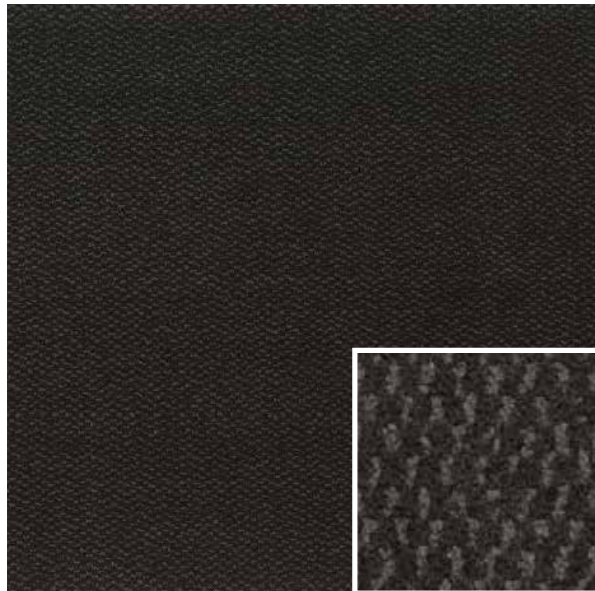
90%



90% of all slips occur when the floor is wet



# Ultra plus mats



Also available in a fitted lift and lay mat option.

## Key features

- Standard service is 26 p.a. (fortnightly)
- Monthly (13p.a.) & weekly (52p.a.) available
- Backing = 100% nitrile rubber
- Total thickness = 10-11mm
- Fire resistance = Dfl-s1
- 20mm anti-trip rubber border all around
- Antistatic = <2kV
- Yarn = 100% ECONYL®
- BS8300 / DDA / ADA compliant
- Colours: graphite only
- Gripper or smooth backed choice
- 32% more soil/moisture capture than standards
- Ideal sink mat for use in washrooms
- Heavy duty micromix pile 66%/33%
- Indoor use only

## Product Specification

Sizes	120x85cm, 150x85cm, 180x115cm, 240x85cm, 350x115cm
Thickness	7-12mm
Colour	Graphite Grey



## Available options

Backing options:				Gripper or smooth
Bespoke Ultra Plus Loose-Lay – 120cm x 85cm	1.02m <sup>2</sup>	4 x 3	17036148	
Bespoke Ultra Plus Loose-Lay – 150cm x 85cm	1.27m <sup>2</sup>	5 x 3	17036150	
Bespoke Ultra Plus Loose-Lay – 180cm x 115cm	2.07m <sup>2</sup>	6 x 4	17036161	
Bespoke Ultra Plus Loose-Lay – 240cm x 115cm	2.76m <sup>2</sup>	8 x 4	17036173	
Bespoke Ultra Plus Loose-Lay – 240cm x 150cm	3.60m <sup>2</sup>	8 x 5	17036185	
Bespoke Ultra Plus Loose-Lay – 350cm x 115cm	4.02m <sup>2</sup>	12 x 4	17036197	
Standard Ultra Plus Loose-Lay – 85cm x 60cm	0.51m <sup>2</sup>	4 x 2	17023397	
Standard Ultra Plus Loose-Lay – 120cm x 85cm	1.02m <sup>2</sup>	4 x 3	17022848	
Standard Ultra Plus Loose-Lay – 150cm x 85cm	1.27m <sup>2</sup>	5 x 3	17022850	
Standard Ultra Plus Loose-Lay – 180cm x 115cm	2.07m <sup>2</sup>	6 x 4	17022861	
Standard Ultra Plus Loose-Lay – 240cm x 85cm	2.04m <sup>2</sup>	8 x 3	17022873	
Standard Ultra Plus Loose-Lay – 350cm x 115cm	4.02m <sup>2</sup>	12 x 4	17022885	

Maximum width is 150cm you can go any size in the opposite direction as long as you are within 3.9sqm. Also available fitted in any matwell upto 3.9sqm

**32% more absorbent than a standard mat**

# Hand dryer mats



## Roller towel cabinet mat



## Key features

- Standard service is 13 p.a. (Monthly)
- Fortnightly (26p.a.) available
- Backing = 100% nitrile rubber
- Total thickness = 10-11mm
- Fire resistance = Dfl-s1
- 18mm anti-trip rubber border all around
- Antistatic = <2kV
- Yarn = 100% ECONYL®
- BS8300 / DDA / ADA compliant
- Bespoke mats i.e. dedicated stock
- Colours: graphite only
- Smooth backed only for hard floor only
- 32% more soil/moisture capture than standards
- Ideal hand dryer mat for use in washrooms
- Also ideal roller towel cabinet mat
- Heavy duty micromix pile 66%/33%
- Internal use only

## Available options

Backing options:			Graphite colour only
Small	60cm x 30cm	Semi-circular	17026763
Large	85cm x 42cm	Semi-circular	17022812



poor solution underneath hand dryers



# Hygiene message mats



Help remind people to sanitise and wash their hands with our new hygiene message mats, as well as protect floors from premature damage and prevent slips.



## Key features

- Standard service is 26p.a. (fortnightly).
- Monthly (13p.a.) and weekly (52p.a.) available.
- Backing = 100% nitrile rubber.
- Total thickness = 9mm.
- Fire resistance = Cfl-s1.
- 18mm anti-trip rubber border all around.
- Antistatic = <2kV.
- BS8300 / DDA / ADA compliant.
- Gripper or smooth backed.
  - Square or rectangular mats are available in gripper or smooth backing.
  - Semi circular mat is available in smooth backing only and is for smooth floors only.
- Internal use only.
- Bespoke designs available.

## Advanced laundering

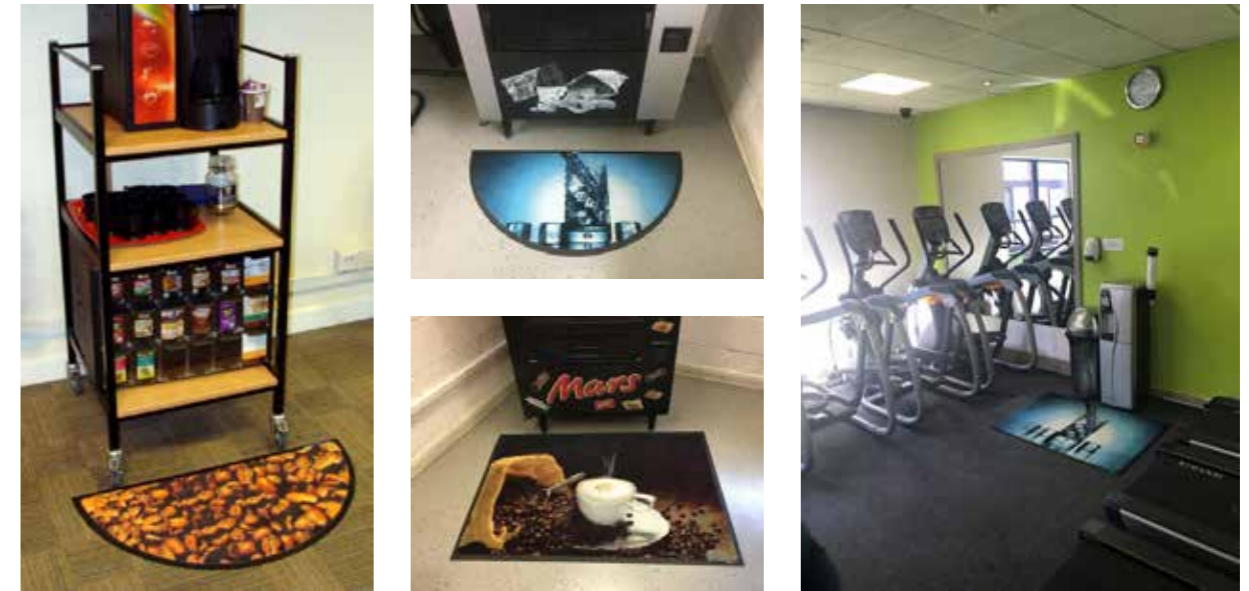
Mats are thoroughly deep cleaned to remove all moisture, dirt and grit, so they're returned to you looking bright, smart and rich in colour.

## Available options

Wash hands mat	Sanitiser mat	Semi circular mat
use the same code as a normal logo mat		17033238
150 x 85	85 x 85	85 x 42

Bespoke sizes and colours also available if required.

# Workplace office mats



Rectangular mats available in smooth or gripper back.  
Semi-circular mats available in smooth back only for hard surface only.

## Key features

- Standard service is 26 p.a. (fortnightly)
- Monthly (13p.a.) & weekly (52p.a.) available
- Backing = 100% nitrile rubber
- Total thickness = 9mm
- Fire resistance = Cfl s1
- 18mm anti trip rubber border all around
- Bespoke mats i.e. dedicated stock
- Antistatic = <2kV
- BS8300 / DDA / ADA compliant
- Rectangles = gripper or smooth backed
- Semi circular = smooth backed only
- Indoor use only

## Available options

Backing options:	Shape	Smooth or gripper	Smooth backed only
Water cooler mat	120cm x 85cm	Square	17022824
Coffee Vend mat	120cm x 85cm	Square	17022836
Water cooler mat	42cm x 85cm	Semi	17023440
Coffee Vend mat	42cm x 85cm	Semi	17023452



## DID YOU KNOW?

90% of slips occur when the floor is wet. Hand sanitiser can make the surface more slippery than water.



# Shaped mats



Help to remind people to follow instructions in your facility as well as protect floors from premature damage and slips with our new circular message mats.

### Key features:

- Available in 60cm diameter (minimum order of 4)
- 4 core designs for 60cm mats
- Available in 85cm diameter
- Bespoke messaging available in 85cm mats only
- Beneficial to your facility for highlighting necessary measures in place
- Easy to move to different locations around your facility
- Will fit in any area

### Available options

#### Backing options:

Semi Oval - Loose Lay - 85cm x 150cm	17036290
Semi Oval - Loose Lay - 115cm x 200cm	17036306
Semi Oval - Loose Lay - 150cm x 250cm	17036318
Oval - Loose Lay - 85cm x 150cm	17036320
Oval - Loose Lay - 115cm x 200cm	17036331
Oval - Loose Lay - 150cm x 250cm	17036343
Circular - Loose Lay - 85cm x 85cm	17036355
Circular - Loose Lay - 115cm x 115cm	17036367
Semi-Circular - Loose Lay - 115cm x 57cm	17036379
Semi-Circular - Loose Lay - 150cm x 75cm	17036380
Semi-Circular - Loose Lay - 200cm x 100cm	17036392



# PPE message mats

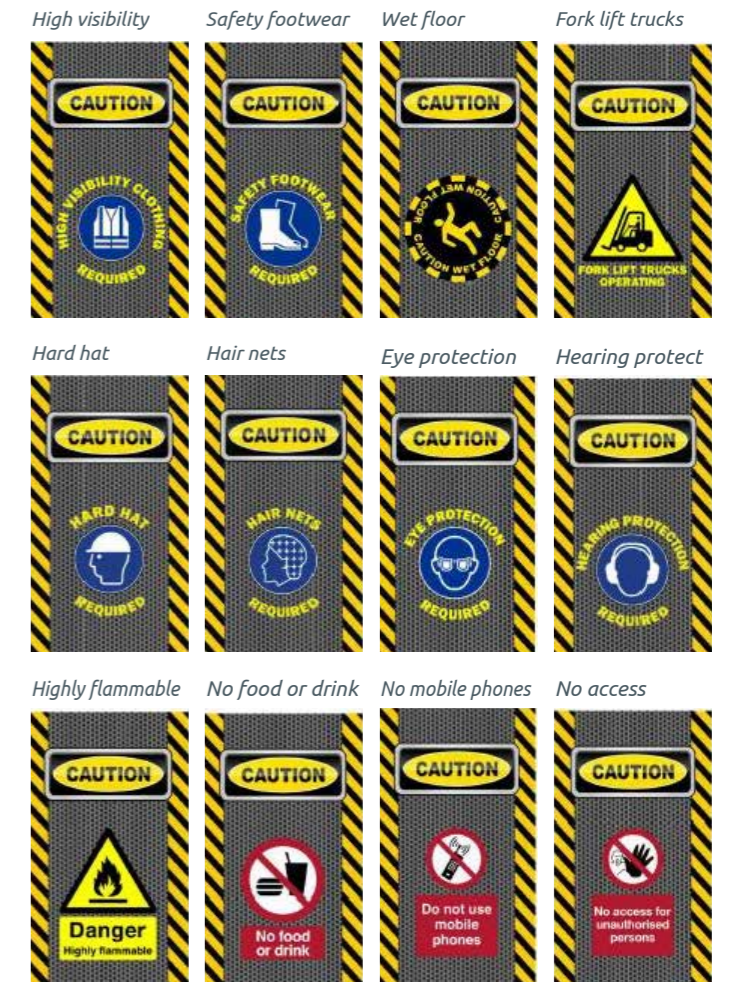


### Key features

- Standard service is 26 p.a. (fortnightly)
- Monthly (13p.a.) & weekly (52p.a.) available
- Backing = 100% nitrile rubber
- Total thickness = 9mm
- Fire resistance = Cfl s1
- 18mm anti trip rubber border all around
- Bespoke mats i.e. dedicated stock
- Antistatic = <2kV
- BS8300 / DDA / ADA compliant
- Gripper or smooth backed
- 12 standard design choices
- Other designs available
- Indoor use only

### Available options

Portrait		Smooth or gripper	
150 x 85	1.27m <sup>2</sup>	5 x 3	17026258



# Comfort mats – anti-fatigue



Comfort and Ultraflow anti-fatigue mats are really useful in engineering environments where swarf is a problem.

**Tip:** think of all the locations where staff are required to stand for long periods, there could be many.

## Key features

- Standard service is 13 p.a. (monthly)
- Fortnightly (26 p.a.) available
- Nitrile foamed rubber
- Total thickness = 8mm
- Fire rating = UL94 HBF
- Reduces leg fatigue and noise
- Antistatic properties
- APMA approved
- Helps address work related illness and injuries
- Impervious to chemical & oil based products
- Colour = Black
- Closed construction
- Internal use only

Employees standing up all day in areas like check-out stations, service counters, and assembly lines or behind bars need physical support to keep motivation and energy. The Comfort anti-fatigue mat concept is specially designed for safety, comfort and protection.

- Made from premium quality nitrile rubber, comfort mats are water resistant and resilient to impact.
- Can be transformational for employees who have to stand for long periods reducing leg fatigue and noise.

Comfort mats can be more competitively priced by offering at lower service intervals (i.e. 13p.a.).

## Available options

Backing options:		Foamed rubber	
84cm x 60cm	0.50m <sup>2</sup>	3 x 2	003961
140cm x 84cm	1.17m <sup>2</sup>	5 x 3	003962
180cm x 120cm	2.16m <sup>2</sup>	6 x 4	005829
300cm x 85cm	2.70m <sup>2</sup>	8 x 4	005831



# Ultraflow mats – anti-fatigue



**Tip:** think of all the locations where staff work in wet conditions. Good for use externally in direct rainfall areas i.e. schools as a scraper mat.

## Key features

- Standard service is 13 p.a. (monthly)
- Fortnightly (26 p.a.) available
- Total thickness = 8mm
- Fire rating = UL94 HBF
- Reduces leg fatigue & lower back pain
- Antistatic properties
- Excellent slip resistance in wet areas
- Helps address slips and trips at work
- Impervious to chemical & oil based products
- Anti microbial properties
- Colour = Black
- Open construction for drainage

Providing extra support for employees standing on their feet for prolonged periods, Ultraflow mats are a comfort mat especially designed for wet areas such as bars and kitchens.

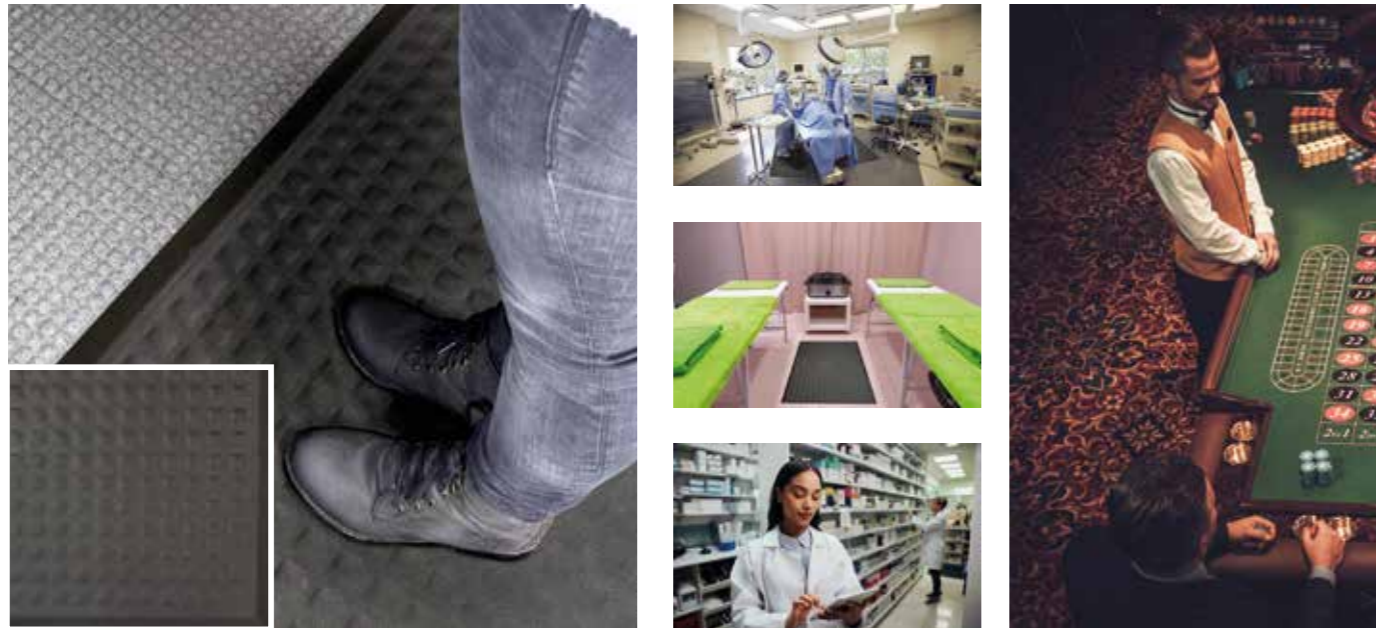
- Designed for use in wet areas as the surface texture prevents slips, the holes allow water to escape and the studded pattern on the bottom directs drainage.
- Can be transformational for employees who have to stand for long periods, as it reduces leg fatigue, along with noise.

Ultraflow mats can be more competitively priced by offering at lower service intervals (i.e. 13p.a.).

One size only			
84cm x 136cm	1.14m <sup>2</sup>	3 x 4½	106379



# Premium anti-fatigue mats



Premium anti fatigue mats are anti-microbial, mats that can be autoclave sterilised and commercially laundered.

## Key features

- Ergonomically superior anti-fatigue mat.
- Textured surface offers superior slip and skid resistance.
- Bevelled edges create a smooth floor-to-mat transition, reducing slip and falls.
- 100% Nitrile Rubber
- Anti-microbial treatment reduces odours by inhibiting the growth of germs and bacteria.
- Lightweight and easy to clean.



Slip and skid resistance

Bevelled edges



Thickness 13 mm

## Available options

Specifications		
Standard sizes (cm)	60x90*	90x150*
Thickness	13 mm	
Type	Closed cell Nitrile Sponge Rubber	

Size Tolerance: +/- 5%  
\*In stock

# Slip Safety Service

Reduce the risk of slip accidents

Do you have a current certificate to defend your business in case of a slip accident on your site?

Pendulum Slip testing is the standard test method used by HSE to assess wet and dry floor slipperiness. Caution Wet Floor signs do not mitigate liability on floors that are unsafe they just highlight the issue that needs addressing.

**phs** can undertake this testing in your premises. Providing you with a detailed analysis with recommendations for improvements.

**Ensuring your premises are safe and compliant.**

- Slips are the most common cause of accident, injury & claims.
- An average claim is £10k but the true cost of an accident is £100k+
- Insurance premiums are rising all the time and given that slips are 33% of claims, managing that risk has never been more important
- If you are able to provide evidence of compliant results, not only will you see fewer accidents, but it will help to defend claims

We conduct testing for insurers, lawyers, floor suppliers, FM companies and, of course, many businesses. Our testing includes a detailed, court-ready report, including test Chimes results, findings and recommendations.

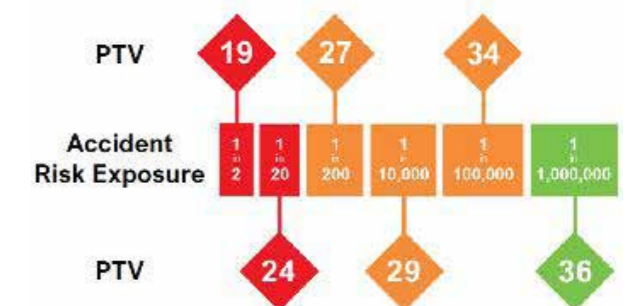


Slip Safety

Chimes

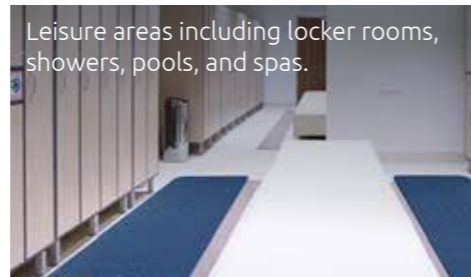
The 6 most common reason for slips

Excluding Northern Ireland

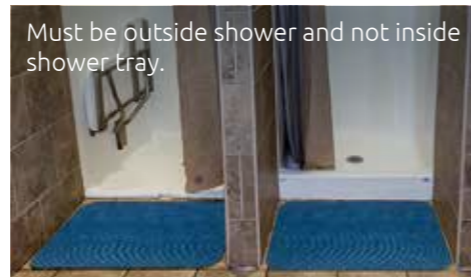


# Wet area matting

Durable Wet Area Matting for indoor and outdoor use.



Leisure areas including locker rooms, showers, pools, and spas.



Must be outside shower and not inside shower tray.



## Key features

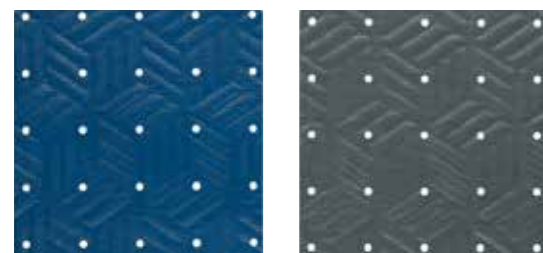
- Slip resistant for increased safety in wet area
- Comfortable for users to walk on
- Hygienically treated with anti-microbial treatment
- Made from durable closed-cell nitrile rubber that is UV resistant
- Available on a lift and lay cleaning service

## Safety standards

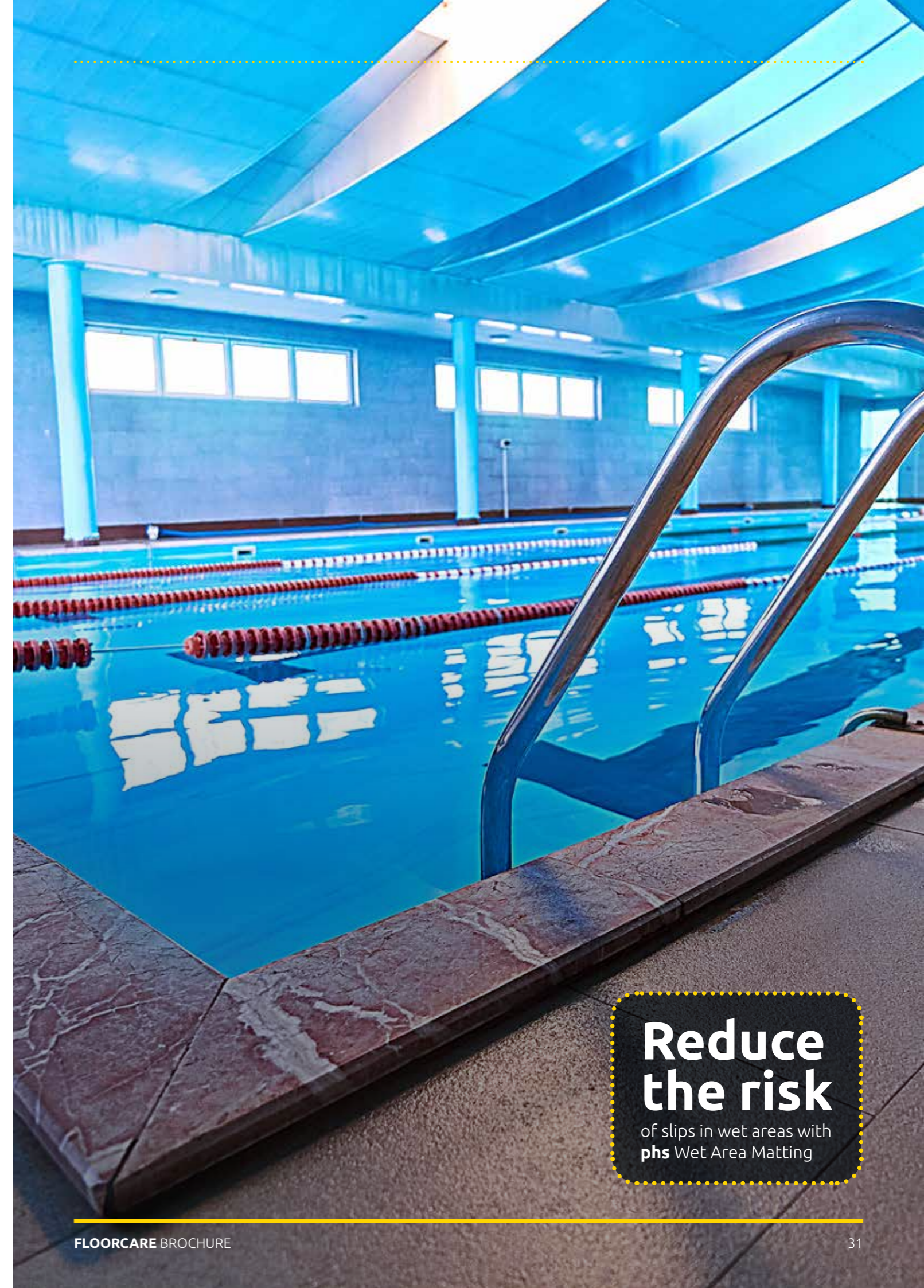
- Certified high-traction by the National Floor Safety Institute (NFSI)
- Passes flammability standard CPSC-FF1-70
- ASTM C1028-96 Static Coefficient of Friction: Dry 0.99 Wet 0.82

## Available options

Colour	Size	Product Code
Blue	60cm x 90cm	17036513
	90cm x 150cm	17036525
	90cm x 300cm	17036537
Grey	60cm x 90cm	17036549
	90cm x 150cm	17036550
	90cm x 300cm	17036562



Material: High-density, closed-cell nitrile rubber foam  
Thickness: 6.35mm



**Reduce the risk**  
of slips in wet areas with  
**phs** Wet Area Matting



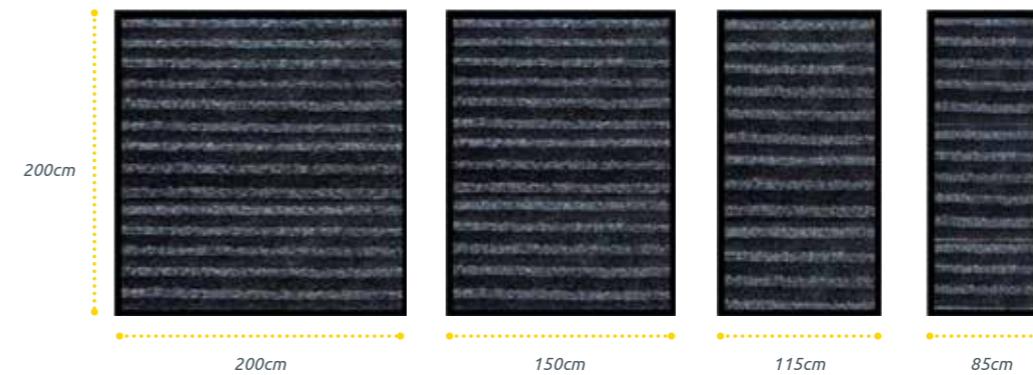
# Fitted Lift and Lay matting solutions



# Fitted principal mats



Principal mats have a pile direction as shown below  
**Current standard sizes – loose lay and DMS**



Principal mats are made in only 4 specific sizes therefore you need to select the size which will cover the area you want to install.

NB. Fitted mats can only be installed into an existing matwell or into carpeted areas. They can not be installed into a hard floor area.

Backing options:			
200cm x 85cm	1.7m <sup>2</sup>	6 <sup>1</sup> / <sub>2</sub> x 3	16461071
200cm x 115cm	2.3m <sup>2</sup>	6 <sup>1</sup> / <sub>2</sub> x 4	16461083
200cm x 150cm	3.0m <sup>2</sup>	6 <sup>1</sup> / <sub>2</sub> x 5	16461095
200cm x 200cm	4.0m <sup>2</sup>	6 <sup>1</sup> / <sub>2</sub> x 6 <sup>1</sup> / <sub>2</sub>	16461101

## Key features

- Standard service is 26 p.a. (fortnightly)
- Monthly (13p.a) & weekly (52p.a.) available
- Backing = 100% nitrile rubber DMS
- Total thickness = 10-11mm
- Fire resistance = Dfl s1
- Antistatic = <2kV
- Yarn = 100% ECONYL®
- BS8300 / DDA / ADA compliant
- Only these 4 sizes available
- Bespoke mats i.e. dedicated stock
- Colours: mink and sapphire
- 50% more soil capture than standard mats
- 59% more moisture absorb than standard mats
- Principal = it was our first 100% ECONYL® mat
- Most effective mat at soil & moisture capture
- Two different textiles combined together
- Indoor use only



LIFT & LAY SERVICE



BS8300 COMPLIANT

# Logo / image – fitted mats



## Key features

- Standard service is 26 p.a. (fortnightly)
- Monthly (13p.a.) & weekly (52p.a.) available
- Backing = 100% nitrile rubber DMS
- Total thickness = 10-11mm
- Fire resistance = Cfl s1
- Bespoke mats i.e. dedicated stock
- Antistatic = <2kV
- BS8300 / DDA / ADA compliant

- 150 colour choices which can be made into
- 5 million variations through shading
- Bespoke sizes are available up to max. 3.9m
- HD344 can not be used as a background colour
- Try to use dark practical background colours
- Jpeg hi resolution images are best for image mats
- Internal Use only

### Options:

Measures up to 1.275m <sup>2</sup>	006818
Measures up to 2.07m <sup>2</sup>	006819
Measures up to 2.76m <sup>2</sup>	006820
Measures up to 3.75m <sup>2</sup>	007479
Measures up to 3.9m <sup>2</sup>	006821



### DID YOU KNOW?

On average an entrance mat absorbs so much material that it becomes ineffective after two weeks of use.

# Printed plain colour – fitted mats



These can also be used as 150 plain colours (except HD344) same price as a logo mat from your Colour Symphony presenter



## Key features

- Standard service is 26 p.a. (fortnightly)
- Monthly (13p.a.) & weekly (52p.a.) available
- Backing = 100% nitrile rubber DMS
- Total thickness = 10-11mm
- Fire resistance = Cfl s1
- Bespoke mats i.e. dedicated stock
- Antistatic = <2kV
- BS8300 / DDA / ADA compliant

- 150 colour choices which can be made into 5 million variations through shading
- Bespoke sizes are available up to max. 3.9m
- HD344 can not be used
- Internal use only
- Do not use light colours with HD344

Measure the matwell and select the size which will cover the area you want to install.

Options:	
Measures up to 1.275m <sup>2</sup>	107956
Measures up to 2.07m <sup>2</sup>	107957
Measures up to 2.76m <sup>2</sup>	107958
Measures up to 3.75m <sup>2</sup>	107959
Measures up to 3.9m <sup>2</sup>	107960

Maximum width or length is 185cm you can go any size in the opposite direction as long as you are within 3.9sqm

NB. Fitted mats can only be installed into an existing matwell or into carpeted areas. They can not be installed into a hard floor area.

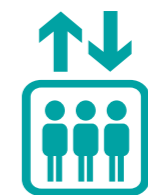


# Lift car mats – logo / image



## Key features

- Standard service is 26 p.a. (fortnightly)
- Monthly (13p.a.) & weekly (52p.a.) available
- Backing = 100% nitrile rubber DMS
- Total thickness = 10-11mm
- Fire resistance = Cfl s1
- Bespoke mats i.e. dedicated stock
- Antistatic = <2kV
- BS8300 / DDA / ADA compliant
- 150 colour choices which can be made into 5 million variations through shading
- Bespoke sizes are available
- HD344 can not be used as a background colour
- Try to use dark practical background colours
- Jpeg hi resolution images are best for image mats
- Internal Use only



## TWISTING & TURNING...

To press Lift buttons make Lift Cars an ideal place to fit a mat

Options:	
Measures up to 1.275m <sup>2</sup>	17022897
Measures up to 2.16m <sup>2</sup>	17022903
Measures up to 2.88m <sup>2</sup>	17022915
Measures up to 3.6m <sup>2</sup>	17022927
Measures up to 3.96m <sup>2</sup>	17022939



# Permanent fitted matting solutions



## Forma HD – plain

Fitted Entrance Matting System



Surface mounted using KUB268 aluminium trim



Forma HD fitted into a matwell

Ideal for heavy duty areas, will fit any size area with no limitation on size. Adhered to floor so no movement or shrinkage issues. Forma HD is for internal use areas only.



### Key features

- Standard service is 4 p.a. (quarterly)
- Serviced on site
- Yarn = 100% ECONYL®
- Backing = 100% recyclable PVC
- 12mm option shallow wells and surface mounted
- 18mm option deep wells 18mm and above
- Permanently fitted adhered down on site
- Fire resistance = Bfl s1
- Antistatic = <2kV
- Wear resistance heavy to severe
- BS8300 / DDA / ADA compliant
- 5 colour choices
- Indoor use only

**Please Note:** 10cm is added to the size of each mat in both directions as standard procedure by the logo's team to give the fitter the material required to cut. If Screeding, Plywood, PVC or Aluminium ramped edging is required use code 005833



Options:	FHD 12mm	FHD 18mm
Measures up to 2.23m <sup>2</sup>	108156	136296
Measures up to 3.34m <sup>2</sup>	108157	136297
Measures up to 4.46m <sup>2</sup>	108158	136298
Measures up to 5.57m <sup>2</sup>	108159	136299
Measures up to 6.69m <sup>2</sup>	108160	136300
Measures up to 7.8m <sup>2</sup>	108161	136301
Measures up to 8.92m <sup>2</sup>	108162	136302
Measures up to 10.03m <sup>2</sup>	108163	136303
Measures up to 11.15m <sup>2</sup>	108164	136304
Measures up to 13.94m <sup>2</sup>	108165	136305
Measures up to 18.58m <sup>2</sup>	108166	136306
Measures up to 24.16m <sup>2</sup>	108167	136307
Measures up to 30.66m <sup>2</sup>	108168	136308
Measures up to 37.16m <sup>2</sup>	108169	136309
Measures up to 44.60m <sup>2</sup>	108170	136310
Measures up to 55.75m <sup>2</sup>	108171	136311

# Forma HD – logo

Forma incorporating a Logo Mat



Forma HD serviced on site quarterly with logo service via service driver fortnightly. Same price and code as the Forma but logo is FOC. always confirm with the customer the size of their fitted logo mat and where they would like it positioned.

## Key features

- Standard service is 4 p.a. (quarterly)
- Serviced on site
- Yarn = 100% ECONYL®
- Backing = 100% recyclable PVC
- 12mm option shallow wells and surface mounted
- 18mm option deep wells 18mm and above
- Permanently fitted adhered down on site
- Fire resistance = Bfl s1
- Antistatic = <2kV
- Wear resistance heavy to severe
- BS8300 / DDA / ADA compliant
- 5 colour choices
- Internal use only

**Please Note:** If Screeding, Plywood, PVC or Aluminium ramped edging is required use code 005833



Options:	FHD 12mm	FHD 18mm
Measures up to 2.23m <sup>2</sup>	108156	136296
Measures up to 3.34m <sup>2</sup>	108157	136297
Measures up to 4.46m <sup>2</sup>	108158	136298
Measures up to 5.57m <sup>2</sup>	108159	136299
Measures up to 6.69m <sup>2</sup>	108160	136300
Measures up to 7.8m <sup>2</sup>	108161	136301
Measures up to 8.92m <sup>2</sup>	108162	136302
Measures up to 10.03m <sup>2</sup>	108163	136303
Measures up to 11.15m <sup>2</sup>	108164	136304
Measures up to 13.94m <sup>2</sup>	108165	136305
Measures up to 18.58m <sup>2</sup>	108166	136306
Measures up to 24.16m <sup>2</sup>	108167	136307
Measures up to 30.66m <sup>2</sup>	108168	136308
Measures up to 37.16m <sup>2</sup>	108169	136309
Measures up to 44.60m <sup>2</sup>	108170	136310
Measures up to 55.75m <sup>2</sup>	108171	136311



# Tergo HD

Fitted Entrance Matting System – must be under a canopy



Tergo can also be combined with Forma, in internal areas to provide a scrape and absorb effect.

Tergo in an exterior sheltered matwell.

Ideal for heavy duty areas, will fit any size area no limitation on size, adhered to floor so no movement or shrinkage issues. Tergo HD is for external use areas under a canopy. Same textile as Tuff mats



## Key features

- Standard service is 4 p.a. (quarterly)
- Serviced on site
- Yarn = 100% ECONYL®
- Backing = 100% recyclable PVC
- 12mm option shallow wells and surface mounted
- 18mm option deep wells 18mm and above
- Permanently fitted adhered down on site
- Fire resistance = Bfl s1
- Antistatic = <2kV
- Wear resistance heavy to severe
- BS8300 / DDA / ADA compliant
- Single colour choice = grey
- External use under a canopy only

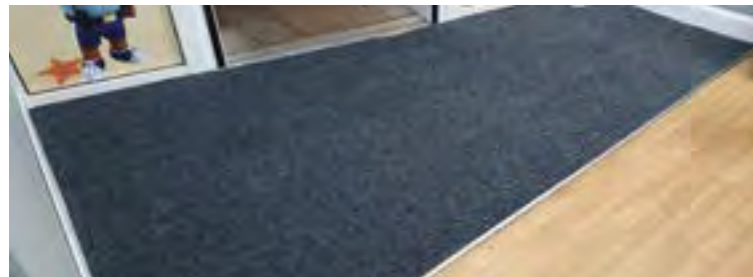
**Please Note:** If Screeding, Plywood, PVC or Aluminium ramped edging is required use code 005833



Options:	FHD 12mm	FHD 18mm
Measures up to 2.23m <sup>2</sup>	16459386	16459544
Measures up to 3.34m <sup>2</sup>	16459398	16459556
Measures up to 4.46m <sup>2</sup>	16459404	16459568
Measures up to 5.57m <sup>2</sup>	16459416	16459570
Measures up to 6.69m <sup>2</sup>	16459428	16459581
Measures up to 7.8m <sup>2</sup>	16459430	16459593
Measures up to 8.92m <sup>2</sup>	16459441	16459600
Measures up to 10.03m <sup>2</sup>	16459453	16459611
Measures up to 11.15m <sup>2</sup>	16459465	16459623
Measures up to 13.94m <sup>2</sup>	16459477	16459635
Measures up to 18.58m <sup>2</sup>	16459489	16459647
Measures up to 24.16m <sup>2</sup>	16459490	16459659
Measures up to 30.66m <sup>2</sup>	16459507	16459650
Measures up to 37.16m <sup>2</sup>	16459519	16459572
Measures up to 44.60m <sup>2</sup>	16459520	16459584
Measures up to 55.75m <sup>2</sup>	16459532	16459596

# Foris – fitted

Internal only



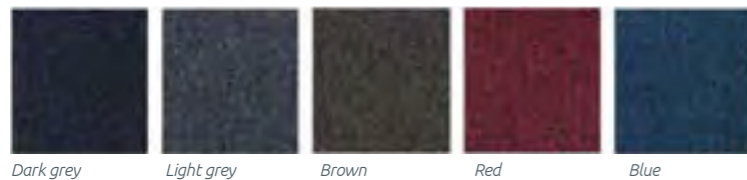
These are 100% ECONYL® which are made out of 5 colour ways.

Plain coloured mats tend to show dirt up very quickly that is why we have produced a range of flecked textiles which are a mix of colours to help camouflage day to day dirt and ensure the mats remain looking good until they are serviced next.

Above is a range called Foris which are the same colours as used in the Milliken Forma HD. Foris has a scraper filament called a monofilament that stands up to the heavy foot traffic. If you are supplying a logo fitted within foris always confirm with the customer the size of their fitted logo mat and where they would like it positioned.

## Key features

- Standard service is 4 p.a. (quarterly)
- Serviced on site
- Yarn = 100% ECONYL®
- Backing = 100% recyclable PVC
- 9-10mm shallow wells and surface mounted
- Permanently fitted adhered down on site
- Fire Resistance = Bfl s1
- Antistatic = <2kV
- Wear resistance medium to heavy
- BS8300 / DDA / ADA compliant
- 5 colour choices
- Internal use only



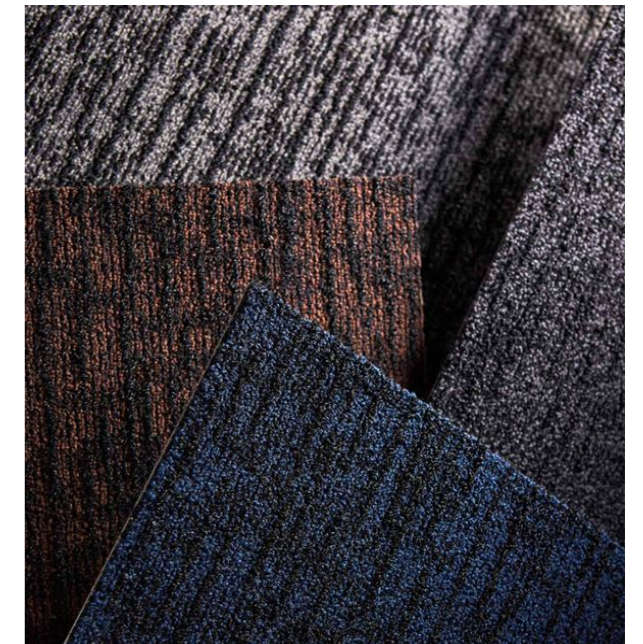
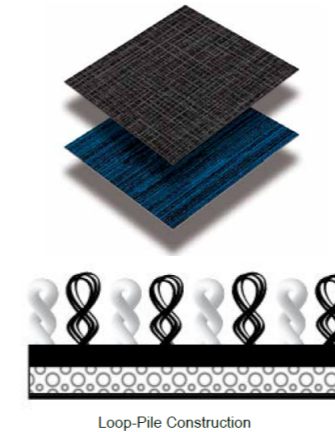
**Please Note:** If Screeding, Plywood, PVC or Aluminium ramped edging is required use code 005833

Options:	Foris 10mm
Measures up to 2.23m <sup>2</sup>	16459192
Measures up to 3.34m <sup>2</sup>	16459209
Measures up to 4.46m <sup>2</sup>	16459210
Measures up to 5.57m <sup>2</sup>	16459222
Measures up to 6.69m <sup>2</sup>	16459234
Measures up to 7.8m <sup>2</sup>	16459246
Measures up to 8.92m <sup>2</sup>	16459258
Measures up to 10.03m <sup>2</sup>	16459260
Measures up to 11.15m <sup>2</sup>	16459271
Measures up to 13.94m <sup>2</sup>	16459283
Measures up to 18.58m <sup>2</sup>	16459295
Measures up to 24.16m <sup>2</sup>	16459301
Measures up to 30.66m <sup>2</sup>	16459313
Measures up to 37.16m <sup>2</sup>	16459325
Measures up to 44.60m <sup>2</sup>	16459337
Measures up to 55.75m <sup>2</sup>	16459349



# PHS Smart Step – fitted

Internal only

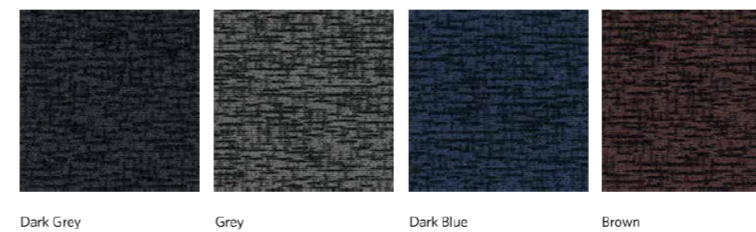


PHS Smart Step is an exceptionally versatile modular entrance matting system that creates a stunning first impression in spaces that need to create an effective barrier against the elements.

Designed to provide a superior combination of performance and aesthetics, the ECONYL® dual-fibre loop polyamide yarn construction will stop dirt and moisture at the door, while allowing easy removal during maintenance. The tiles are supplied in 50cm x 50cm size and in a 9.9mm gauge with each box containing 12 tiles which assemble to 3m<sup>2</sup>.

## Key features

- Standard service is 4 p.a. (quarterly)
- Serviced on site
- Yarn = 100% ECONYL®
- Backing = 100% PVC Free
- 9.9mm shallow wells and surface mounted
- Permanently fitted adhered down on site
- Fire Classification = Cfl s1
- Antistatic = <3.5kV
- Wear resistance medium to heavy
- BS8300 / DDA / ADA compliant
- 4 colour choices
- Internal use only



Options:	Smart Step 9.9mm
Measures up to 2.30m <sup>2</sup>	17038030
Measures up to 3.34m <sup>2</sup>	17038042
Measures up to 4.46m <sup>2</sup>	17038054
Measures up to 5.57m <sup>2</sup>	17038066
Measures up to 6.69m <sup>2</sup>	17038078
Measures up to 7.8m <sup>2</sup>	17038080
Measures up to 8.92m <sup>2</sup>	17038091
Measures up to 10.03m <sup>2</sup>	17038108
Measures up to 11.15m <sup>2</sup>	17038110
Measures up to 13.94m <sup>2</sup>	17038121
Measures up to 18.58m <sup>2</sup>	17038133
Measures up to 24.16m <sup>2</sup>	17038145
Measures up to 30.66m <sup>2</sup>	17038157
Measures up to 37.16m <sup>2</sup>	17038169
Measures up to 44.60m <sup>2</sup>	17038194
Measures up to 55.75m <sup>2</sup>	17038200



# Megahold & Anka-pad

Internal only

Megahold is a specialist backing option available from PHS specifically designed for hard floor surface to improve mat stability and help prevent movement. In combination with our unique Anka-pad system, the Megahold also solves mat movement problems on textile surfaces such as carpets.



➤ Ideal for heavy traffic areas such as retail, shopping centres and airports



### Installation of Megahold™ Mats

New mats should be washed before use. Ensure that the back of the mat is free of dirt and water.

Walk across the mat to activate suction cups.

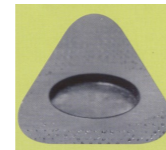
Mat in use - resistant to movement.



Options:	Code
Ultra Plus - Megahold - 85 x 150cm	17037890
Ultra Plus - Megahold - 115 x 180cm	17037906
Ultra Plus - Megahold - 85 x 300cm	17037918

Options:	Code
Logo - Megahold - 85 x 150cm	17037920
Logo - Megahold - 115 x 180cm	17037931
Logo - Megahold - 85 x 300cm	17037943

Options:	Code
Plain - Megahold - 85 x 150cm	17037955
Plain - Megahold - 115 x 180cm	17037967
Plain - Megahold - 85 x 300cm	17037979



Megahold unique suction cup design

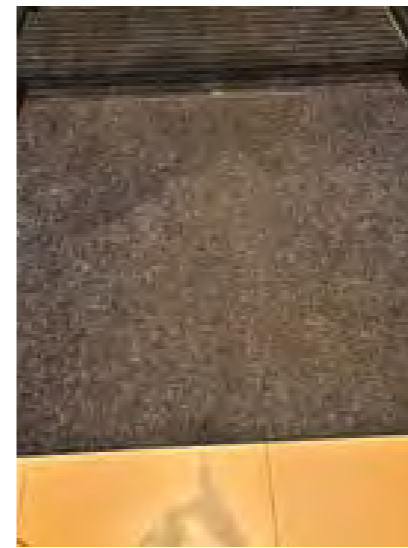


Megahold with Anka-Pad

Carpet Option:	Code
Anka-Pad Medium - 70 x 130cm	17037980
Anka-Pad Large - 95 x 160cm	17037992

# Fixed entrance mat cleaning

Internal only



Before cleaning



After cleaning



Our team of mat cleaners will attend your site and give a regular clean to customers' own fixed entrance matting. For areas larger than 30 sqm, please contact the floorcare team. Cleaning matting prolongs its life and we can offer our own replacement products when mats lose their effectiveness. Without regular deep cleaning, fixed entrance mats will wear quicker and be less effective as a barrier to dirt and water.

For confirmation on whether your matting is able to be serviced, please send a picture to our Floorcare team.



- **Key features**
- Standard service is 4 p.a. (quarterly)
  - Serviced on site
  - Indoor mats only
  - Best results on mats with textile component
  - Avoid all coir matting
  - Effective on most types of entrance mat

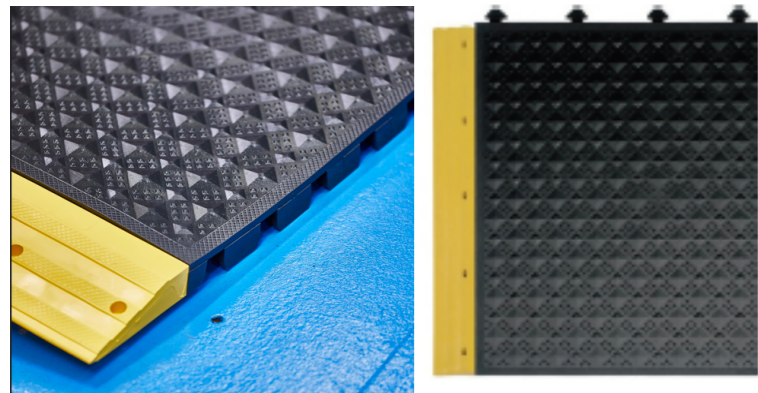
Options:	Code:
Fixed Entrance Matting Clean less than 10sqm	16408135
Fixed Entrance Matting Clean less than 10-30sqm	16408147





Our recycled products are made from at least 85% recycled materials.

# PHS Work Matta™ – fitted



PHS Work Matta™ is a 25mm modular, anti-fatigue surfacing engineered to tolerate the harsh conditions of industrial and manufacturing environments whilst promoting well being and fighting fatigue.

### Key features

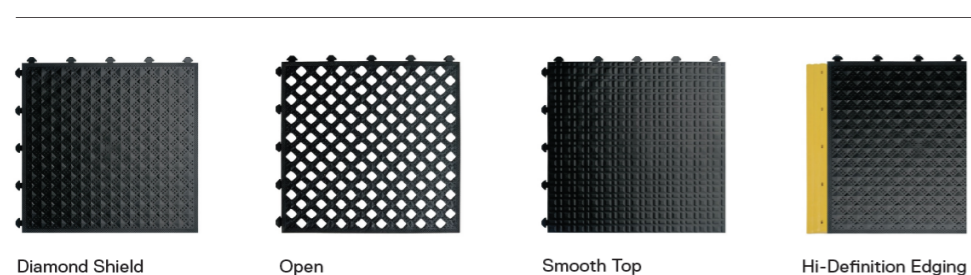
- Annual safety Inspection (1 pa)
- 3 or 5 Year Agreements
- Made from 85%+ recycled content
- End of life recyclable product
- ASTM, ADA & UFAS Accessibility Standards
- Wear resistance heavy to extreme
- Available in Grit Finish for oily environments
- Available in open or closed formats

All Work Matta™ flooring tiles utilise a unique compression column construction, specifically engineered to encourage proper body alignment, while promoting a calculated degree of movement or 'sway'. This almost imperceptible motion stimulates the muscles and promotes the efficient circulation of blood through the veins – especially in the legs – which is key to preventing worker fatigue and discomfort.

### WHY ARE ERGONOMICS SO IMPORTANT?

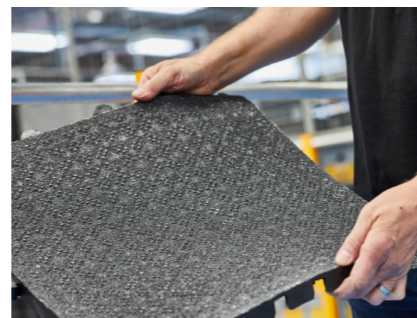
Oxygenated blood is pumped by the heart, through arteries, around our body which uses the oxygen as fuel. The blood then returns, via the veins, to our heart and lungs for 'refueling' and the process begins again with re-circulation of oxygenated blood through the arteries. Blood pressure and the normal contracting and relaxing of muscles around veins as we move, facilitates the return journey of blood through the one-way valve system in veins. This process can be inhibited when we have to stand on a hard surface or our movement is restricted for prolonged periods. Work Matta™ ergonomic flooring is designed to help promote efficient blood circulation.

### SURFACE OPTIONS



**Product Code:** Work Matta 25mm

Spw Mark Gamble or Paul Hipkiss 17037256



Grit Finish for Oily environments

Tile Size: 500mm x 500mm  
(50cm x 50cm)

Edge size: 100mm x 500mm  
(10cm x 50cm)

Survey required by Floorcare Specialist



# Symbols – explained



Our Lift and Lay Service provides a perfect end to end system where our service driver collects the dirty mat from a premises whilst immediately replacing it with an identical clean mat. The dirty mats are then taken to our specialist mat processing plants around the UK to be thoroughly and hygienically cleaned and dried ready for their next delivery. The maximum H&S size we can process is 4.02sqm via this service.

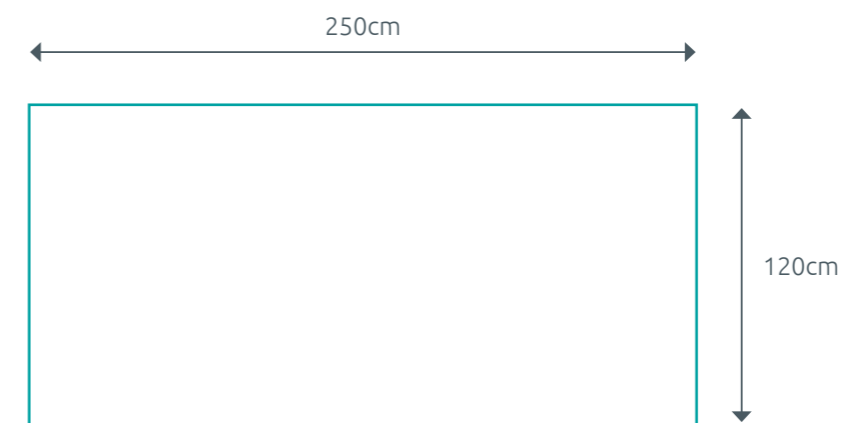


Our On-Site Service provides a specialist on-site hot water extraction process clean on a quarterly basis for mats that are permanently fitted on site. Between services the daily cleaning i.e. vacuuming etc. is carried out by the client's own normal cleaning staff. These mats are typical fitted into matwell or exceptionally large mats such as our Foris range which exceed the normal 4.02sqm size.



The majority of our flooring range complies with BS8300 / DDA / ADA building regulations. Furthermore our Principle mats are all designed specifically to be a full 2m long to cater for the circumference wheel of a wheelchair.

# Working out the sqm



$$250\text{cm} \times 120\text{cm} = 2.5\text{m} \times 1.2\text{m} = 3\text{sqm}$$





phs Group

- Wash
- Work
- Treat
- Health
- Speci

Matting

5 RFE

www.phs

029 2



**phs** Group, Block B, Western Industrial Estate  
Caerphilly CF83 1XH

**029 2080 9090 | [productinfo@phs.co.uk](mailto:productinfo@phs.co.uk) | [phsgroup.co.uk](http://phsgroup.co.uk)**

**phs** Group a company registered in England & Wales. Company Registration No. 05384799

